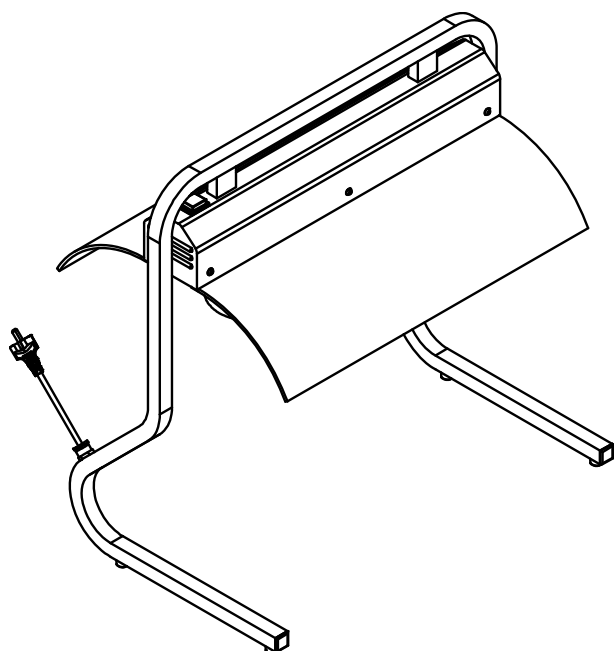


Item:

**\*710.220**

**\*710.330**



## Summary

**EN**

1. Instruction Warnings .....	2
2. Safety and Right Use Warnings.....	2
3. Warranty .....	2
4. Installation.....	2
4.1 Technical Features.....	3
4.2 Assembly.....	3
4.3 Components.....	4
5. Cleaning and Maintenance .....	5
5.1 Breakdowns .....	5
5.2 Electrical scheme .....	5
6. Disposal .....	6

## 1. Instruction Warnings

The final user has to hold the whole instructions. User must store up this document in case of use. Producer do not assume any responsibility for damages incurred due to the failure of improper use of this manual. All measures in this manual are in mm.

## 2. Safety and Right Use Warnings



This product meet the latest technological evolutions and current safety guidelines. The carving stations with infra lamps **INFRA AL**, object of this booklet, is projected to be in compliance with directives and field laws, in order to guarantee a safe and reliable product. Any other use will be considered inapposit to the original destination. Producer do not assume any responsibility for damages caused by an improper use. Responsibility lies only on user. A proper use also includes compliance with the instructions for use and installation and any additional documentation as well as the conditions of inspection and maintenance.

## 3. Warranty

We thank you for purchasing our product, designed and produced for a professional environment. Due to commercial and construction requirements, the manufacturer reserves the right to make changes in order to enhance the quality and use of product. Rocam Losi s.r.l., in compliance with European Community legislation, guarantees its products for 24 months. This guarantee does not include electrical parts, labor and all replacements related to an improper use of the good. Any manipulation carried out automatically excludes the liability of the manufacturer. The products or parts to be replaced or repaired for unequivocal defects in workmanship and materials used must be in a "free port" at the offices of the producer, who after a careful inspection, will repair or replace them. The repairs are carried out exclusively at the headquarters of the manufacturer, and none cost incurred by the customer for repairs will be refunded by the manufacturer unless expressly agreed.

## 4. Installation



The manufacturer declines every responsibility of damage of someone or something caused by the failure to comply with the instructions of this manual. After the unpacking of the item from its packing, proceed by removing the adhesive plastic tape before sartin up the product. Any residual glue has to be removed carefully (do not use abrasive cleaners).

The assembly for the end use concerns only to the infrared bulbs that have to be screwed-in inside the specific ceramic lampholder, and to the protection domes to be fixed with the provided screws following the scheme at page 4. The device is designed to run on AC to the voltage specified on the technical data plate (located on the bottom of the unit). The grounding line is marked by the colours yellow/green and must not be interrupted. The device is provided with a cable in accordance with the CE regulations and with has CE and schuko plug (that can be replaced, when necessary, with a different plug, suitable for the specified wattage and in accordance to the current regulations and guidelines; when necessary, replace the provided cable with a new one with the same features).

2

Rev. 12/2012

*The producer decline every responsibility on any print and/or transcription mistake contained in this booklet*

*The producer can change feautres and datas of this booklet with the proposal of keeping on increase the quality of its products.*

*Anytime and without notice, this booklet can't be considered as contract with third parties.*

**Before switching the appliance:**

- Check if the electrical system can withstand the appliance's load (WATT as indicated on the technical plate)
- Make sure that the electrical system is provided with ground connection according to the current norms and guidelines.
- Connect the device to the grounding network through a cable which has to be connected to the specified screw located on the tube structure of the device itself.

To switch on or to switch off the device, turn on/off the red button onto the top of the device.

**WARNING:**



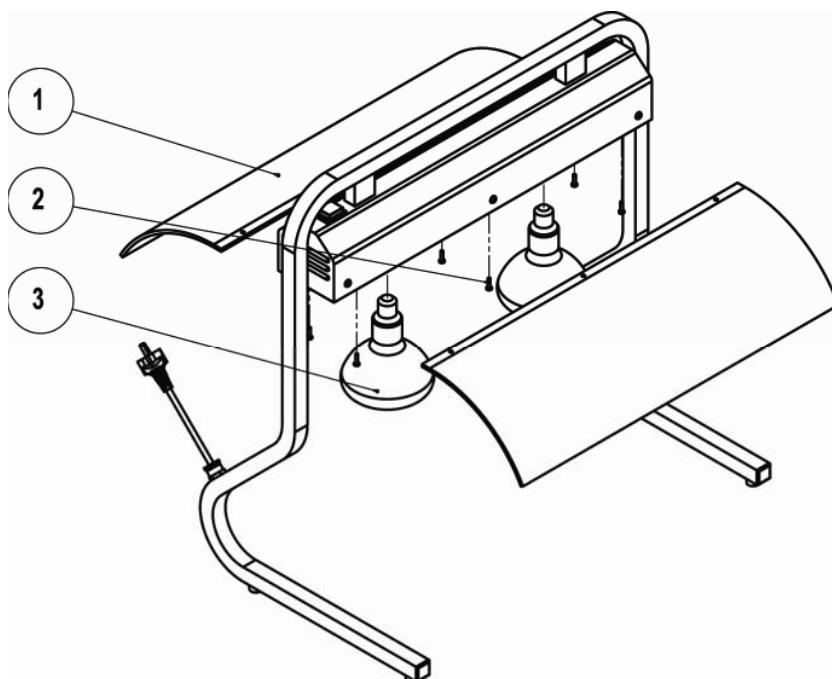
Once turned on, the lamps will reach the desired temperature very quickly. In order to avoid any inconvenience, turn the device on only shortly before starting the service and turn it off shortly after the end. Do not make any structural change to the appliance.

**4.1 Technical Features**

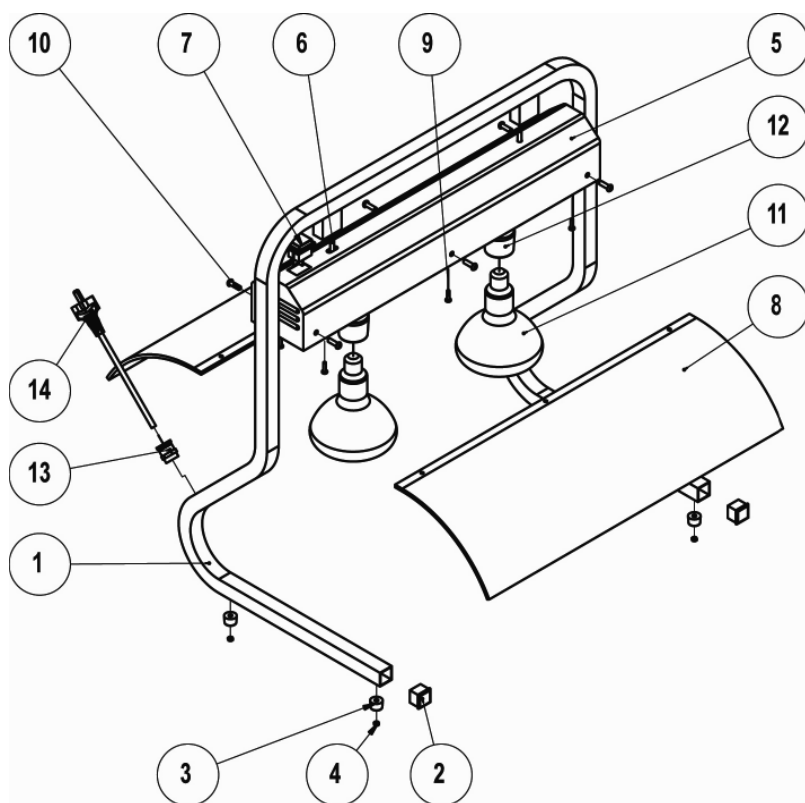
	Infra 2/1 AL	Infra 3/1 AL
<i>Infrared Lamps</i>	2x250W	3x250W
<i>Power supply</i>	230 V	
<i>Weight kg.</i>	8	11

**4.2 Assembly**

The appliance is provided mounted. Before the first use it is necessary to mount the two plexiglass protection domes (1) with the provided screws (2) and to screw-in the infrared light bulbs (3) inside the specific ceramic lamp holders. Do not tight the bulbs too hard to avoid the breaking of the lamp holders.



### 4.3 Components



Ref.	Code	Quantity		Description
		Infra 2/1 AL	Infra 3/1 AL	
1		1	1	Squared s/steel tube structure
2	E01PLPUNQ25	2	2	Black plastic terminal
3	E01PLP/TONP	4	4	Black rubber foot
4	B05ALRI4X11	4	4	Rivet ALU 4x12
5	RL4INP/LAM3	1	1	Outside parable
6		2	2	Screw 6X40 CE
7	D0500INTLUM	1	1	Switch
8	C02PLVULC/2-3	1	1	Plexyglass dome (2pcs)
9		6	8	Screw 4x16 TCTC
10	B01INCE6X20	6	8	Screw 6X20 CE
11	D0200INFRA	2	3	Infrared lamp
12	D0500P/LAMP	2	3	Ceramic lamp-holder
13	D0500PRESOT	1	1	Cable gland
14	D0500CAVO	1	1	Schuko cable

**THE MANUFACTURER'S RESPONSABILITY AND THE PRODUCT'S WARRANTY  
WILL BE CONSIDER VOID AGAINST ANY MANIPULATION MADE BY THE USER.**

Rev. 12/2012

*The producer decline every responsibility on any print and/or transcription mistake contained in this booklet*

*The producer can change feautres and datas of this booklet with the proposal of keeping on increase the quality of its products.*

*Anytime and without notice, this booklet can't be considered as contract with third parties.*

## 5. Cleaning and Maintenance

### WARNING:



Before any cleaning operation unplug the device from the electrical system. Never wash the appliance with water jets in order to prevent water seepage inside the electrical components.



Before any cleaning operation wait for the appliance to be cooled down (wait at least one hour from the end of the service).

The warm plate can be cleaned with st. steel specific cleansers, the two chromed hooks should be cleaned with alcohol or specific cleansers for chromed surfaces, in any case do not use abrasives.

The appliance is provided with a safety thermostat with automatic reset which interrupts the power supply in case of overheating.

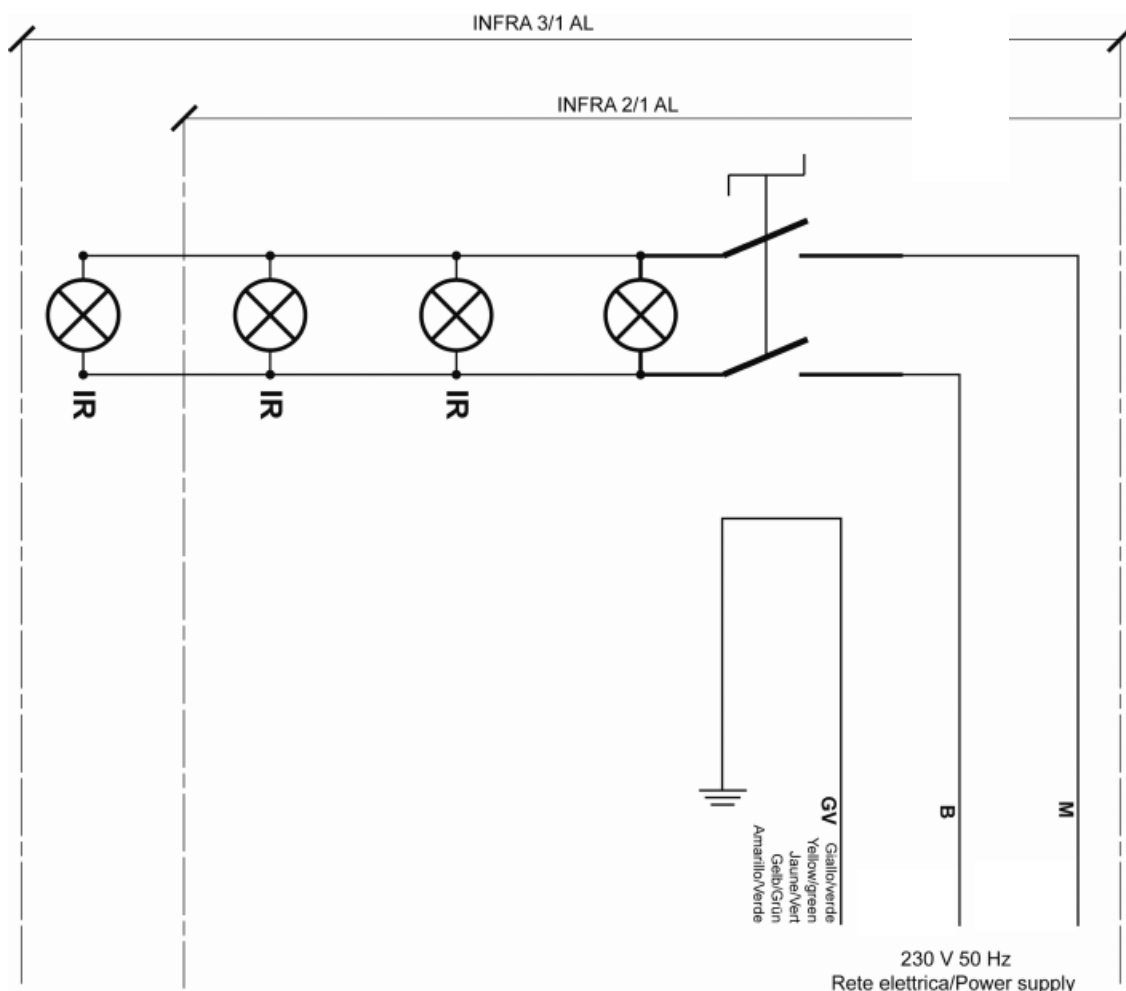
The appliance resumes its normal operation with the standard operating temperature.

### 5.1 Breakdowns

<b>Problem</b>	<b>Possible reason</b>	<b>Solution</b>
The lamps do not light up	Power failure	Check the presence of power in the electric system
	The power cable is worn-out	Replace the cable with a suitable one
	Lamps are burned	Replace the lamps with as many suitable ones
	The switch doesn't work	Contact the retailer
The switch light does not light up	The warm plate has reached the temperature	-
	The switch light is burned	Contact the retailer

### 5.2 Electrical scheme

<b>Ref</b>	<b>Description</b>
IR	Infrared lamps
SP	Switch light



## 6. Disposal

This marking shown on the product or its literature, indicates that it should not be disposed with other household wastes at the end of its working life.



To prevent possible harm to the environment or human health from uncontrolled waste disposal, please separate this from other types of wastes and recycl it responsibly to promote the sustainable reuse of material resources. Household users should contact either the retailer where they purchased this product, or their local government office, for details of where and how they can take this item for environmentally safe recycling.

Business users should contact their supplier and check the terms and conditions of the purchase contract. This product should not be mixed with other commercial wastes for disposal.